



Rushen Primary School Newsletter

November 2018



Port Erin from the Upper Promenade 27.10.18

Dear Parents/Carers,

Please see above our new, updated Rushen Primary School Logo. We needed a version with a higher resolution and took the opportunity to update the logo at the same time. We have kept the integrity of the original design (designed by a past pupil), while making small improvements. These include changing the shape of the shield, making the 'lighthouse' at the end of the pier more similar to the actual structure, making Milner's Tower look like the actual building, redesigning the 'waves' under the sun, replacing the Three Legs of Man with a clearer design and some general tidying up. As you can see, the result is that the logo is much clearer. We would like to thank Port Erin Commissioners for helping us with this.

We continue to build links with the local community, working closely with Port Erin Commissioners on a range of projects from adopting Port Erin Beach, the 'Beach Poppy' and our new plan, involving making houses for our 'little people'. We haven't yet shared this with the children...

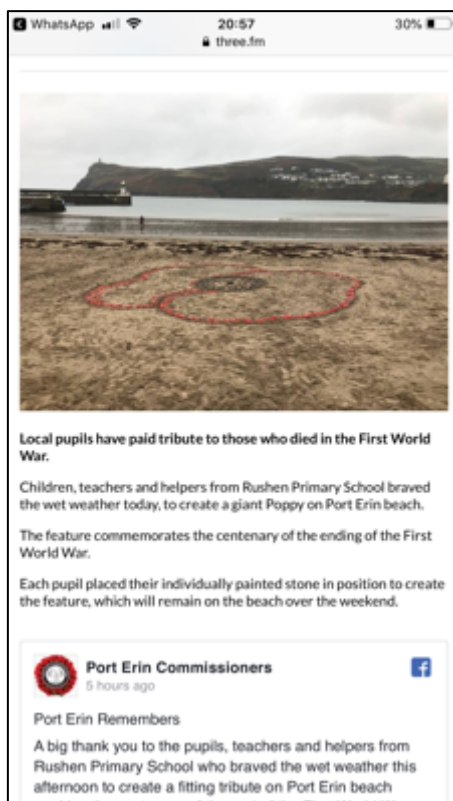
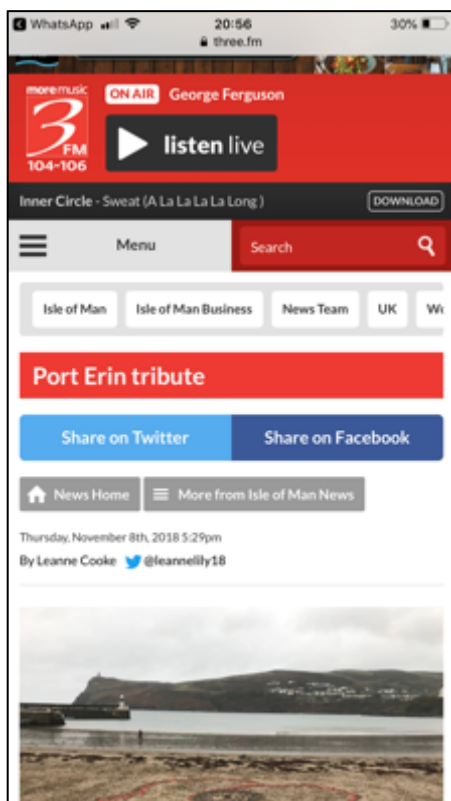
As you all know, the school site is a privilege and all associated with Rushen Primary School know how wonderful it is. We have many plans to use the space in different ways, with a particular focus on outdoor learning and events. Sadly, we continue to experience vandalism. The garden and polytunnel are something the children are very proud of. They enjoy maintaining the garden and growing fruit and vegetables. We harvest the produce and our kitchen staff use them when preparing meals. We have had a lot of support from families and friends to help maintain the garden including with the weeding, as well as volunteers from 'Men in Sheds'. The children, staff and supporters are devastated to see the damage that is continually inflicted on our polytunnel. We would like to share our feelings with the local community and we will be helping the children to communicate these. If you could support us by spreading the word and explaining to as many people as possible about the situation, I am hoping the local community will really get behind us to try to deter those who damage community property.

Ms Owens
Headteacher

Remembrance Day – WW1 Centenary - Beach Poppy



We had some fabulous feedback from across the island...



A special thank you to Port Erin Commissioners for their help and support.

Commemorative Coins for all Isle of Man pupils



We hope you like the commemorative coins that were presented to each child by our local MHKs, Mr Juan Watterson and Mr Laurence Skelly. I am sure that the children will treasure these and will remember the activities they have taken part in over the last few weeks and understand the significance.

Entrance Hall Remembrance Display

Mrs Shaw has designed a wonderful display incorporating our events, learning and activities that the children across the school have been engaged in. Thank you to the teachers, parents/carers, visitors and children for making this theme a success.

We will remember them...

The display will remain for the rest of this half term, so please take a few moments to look when you visit the school for the upcoming events.



Barrule Class Assembly

Barrule Class planned, wrote and performed their class assembly based on Remembrance. One of the highlights was where the children 'hot seated' and interviewed people from past conflicts.



World Kindness Day

Hospice Isle of Man celebrated World Kindness day on Tuesday 13th November. They wrote to us and explained what they were doing:

'It is a day that celebrates acceptance, diversity and love! As an organisation celebrating 35 years of Hospice Care, we would like to share a little love.

In order to achieve this, we would like to provide every primary, secondary and UCM student with a small token. Our staff and volunteers will be delivering boxes to each institution on Monday so that the gifts can be given to pupils/students.

We'd like to challenge you on World Kindness day to do three acts of kindness for other people (e.g. pay someone a compliment, make them a coffee, say hello to a stranger) to take a photo and tag us in social media.'

We have been talking about this in Assembly. We spoke about how to be a good friend, give compliments and be kind so this really fitted in well. A lot of the children were not sure how to give a compliment or to say what others had done well and show we care. Maybe we could all practise at home and in school.

A big thank you to Hospice Isle of Man for the kind gifts!

Hop Tu Naa



Our Hop Tu Naa celebration was a lot of fun as all pupils and staff took part, many dressed in interesting and creative costumes! The highlight, yet again, was definitely the fantastic carved 'moots' that you worked on at home with your children.



Thank you Austin!



Children In Need

On Friday 16th November pupils came to school dressed in 'spots and/or stripes' and made a donation in support of Children in Need. All proceeds will be sent off to the charity. Thank you!





Girls' Football Competition...

On Friday 26th October, a group of girls braved the hail, rain, wind and sun to play an afternoon of fun football against other Island primary schools.

We fielded two separate teams. For one of the teams, it was the first time they had experienced playing as a team in a match situation. All girls gave it their all and were a credit to the school, demonstrating commitment and resilience. Everybody had lots of fun! Well done girls!

Badminton Competition...

Our Badminton team thoroughly enjoyed taking part in the Badminton competition. They played nine games each with one team member playing 18 games, stepping in for someone who wasn't well. Of these 18, she won 14...a fantastic performance! The children's behaviour was excellent and was commented upon. The players demonstrated resilience against a team who were a real challenge to play. The Team finished 4th overall out of 12 schools. Well done our RPS Badminton team!!



Manx, Sport and Recreation (MSR)/after school clubs

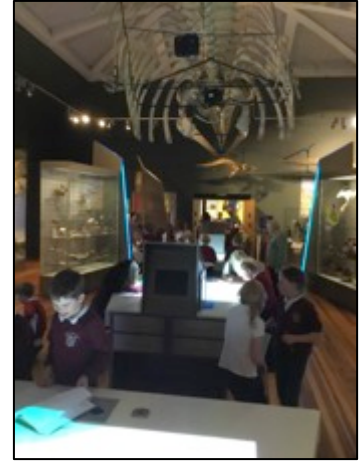
Hockey Club for Year 3/4 pupils (only) is running this half term, led by a coach from Manx Sport and Recreation. The children are thoroughly enjoying the club. Please collect children from the front door/main school entrance following an after school club. If children use their school PE kit for a club, they will get changed into their uniform and return the PE kit to the classroom.

School Trips

All of Key Stage 2 went to the Manx Museum last week to focus on our whole Key Stage theme of World War I. The theme will culminate in a 'pop up' museum in each class that will be viewed by parents before our Christmas Key Stage 2 Carol Service.

Here are a couple of photos from Colby Class's trip to the Manx Museum. Miss Irving told me, "the children had a great day on Thursday 15th November, exploring the ways in which a museum is set up. They made notes on how they could transform our classroom into an interactive WW1 Museum. The children have been extremely enthusiastic during this topic and have begun by working collaboratively in teams to plan the theme. We are looking to include, posters, leaflets, pictures, artefacts and quizzes in our WW1 Museum, as these were a key part of the Manx Museum."

She went on to say, "I am incredibly impressed at how the children are taking such a creative interest in this theme both in and out of school. It is evident that the children have discussed this topic with family members and have brought in to school homemade trenches, letters, newspaper reports, photos and also watched WW1 documentaries at home. This proves that the children are really absorbed in their learning."



Pupil Information, Consent Forms and GDPR

We have recently sent home Consent Forms, App consent forms and GDPR information. Please ensure you complete and sign ALL of the forms as requested. We had at least 40 outstanding forms and this has impacted significantly on the available time we have for administration. Mrs Awkal is the only administrative support we have in our school of almost 300 children and she has many responsibilities including finance, data, management information system and administration as well as helping children, parents and staff. Please help us reduce the workload, for example, ensuring children remember their kit, sending monies into school in a labeled envelope and sending notes to the class teacher to explain any issues. It is much appreciated.

Thursday morning meetings – please contact your Class Teacher for an appointment if you wish to discuss your child's progress or well-being. The Class Teacher may contact you to arrange a meeting.

Reverse Advent Calendar Food Bank



We will be collecting items for Foodbank Isle of Man in preparation for Christmas. Beginning on December 1st we would be grateful for any donations you can make. By bringing food every day in December, similar to an Advent Calendar, we are giving and not taking. Please send items such as:

Tinned meat (ham, stews, mince, hot dogs, etc.), small coffee jars or fruit juice cartons, fish (e.g. salmon), stuffing mix, gravy granules – chicken or turkey, £1 or £2 coins, vegetarian or vegan alternatives, tinned fruit, trifle ingredients or mix, tinned vegetables, Christmas pudding or cake (alcohol-free please!), biscuits, sugar, mince pies, Christmas treats for children, selection boxes, pasta sauce or other sauces, jams or spreads, breakfast cereals or porridge oats, UHT milk, toilet rolls, toothbrushes, toothpaste, kitchen roll, washing up liquid, laundry capsules, shampoo, shower gel, soap.

Please send the donations into school with your child. The donations will be collected and displayed in the Entrance Hall. We are encouraging everybody to bring in at least one item during December. Many local families will benefit from your generosity, particularly at this festive time of year.

Staffing

We would like to say goodbye to Mrs Speight who has moved on to another challenge! She has taken up a position closer to home and we were very sorry to see her go at half term. Mrs Speight has worked at Rushen Primary School for many years, taught across the whole school and will be sadly missed by staff and pupils. She is hoping to visit soon for a proper goodbye and to see all of the children.

Dinner Money

There are several families who have not paid dinner money since half term. Dinners from half term until the end of term cost £78.75 per pupil. Please send any outstanding dinner money to school immediately. If your child changes from school dinners to packed lunches or vice versa, please send a written note in advance to your child's class teacher so that our records may be amended and invoices stopped.



DATES FOR YOUR DIARY

The Great Rushen Bake Off!

We are planning a cake sale to raise money for a local charity close to all our hearts. We will be asking families to bake cakes to sell and there will be a competition to bake a cake on the theme of...? A 'celebrity' panel will choose the winner...

Our WW1 Museum will be open between 1.30pm-2.20pm and 5.00pm-5.50pm on Wednesday 12 December.

Christmas Performances

| | | |
|------------------------|----------------|---------|
| Wed 12 December 2018 | Yrs 3, 4, 5, 6 | 2.30pm |
| Wed 12 December 2018 | Yrs 3, 4, 5, 6 | 6.00pm |
| Thurs 13 December 2018 | Yrs R, 1, 2 | 2.00pm |
| Fri 14 December 2018 | Yrs R, 1, 2 | 10.00am |

(Performance start times may need to be adjusted slightly once we have started rehearsals – we will send a slip home to notify you if this is the case.)

Christmas Parties

Monday 17 December Year 2 (1.30pm)
Tuesday 18 December Year 1 (1.30pm)
Wednesday 19 December Years 3 & 4 (1.30pm)
Wednesday 19 December Years 5 & 6 (5.30pm – 6.45pm)
Thursday 20 December Reception (1.30pm)

Children may bring a set of party clothes to change into after lunch on the day of their party.

Friday 21 December 2018. *If pupils would like to, they may wear a Christmas jumper to school instead of their school sweatshirt on the last day of term. Pupils are also welcome to bring a Christmas Cracker to school for lunchtime that day.*

Christmas Performance Tickets

Our WW1 Museum will be open between 1.30 -2.20pm and 5 – 5.50pm on Wednesday 12 December, prior to the KS2 performances.

Please would you complete the slip below and return it to your child's class teacher as soon as possible to reserve your tickets. Fire regulations dictate how many tickets we are allowed to distribute, therefore we need to limit tickets to two per family per performance, initially, on a first come/first served basis. If you would like more than two tickets, please add these to your request slip and we will distribute any spare tickets that are available on Friday 7th December. These performances are not suitable for babies or pre-schoolers, so please only bring them if absolutely necessary. Babies/pre-schoolers attending a performance must have a ticket. Please note that tickets must be shown at the door on the day of the performance to comply with these regulations. Thank you.

Christmas Performance Ticket Request

| Pupil Name | | Class | <u>Number of tickets</u> | <u>Extra tickets</u> <i>(if available)</i> |
|------------------------|----------------|-------------|--------------------------|---|
| Wed 12 December 2018 | Yrs 3, 4, 5, 6 | 2.30pm | | |
| Wed 12 December 2018 | Yrs 3, 4, 5, 6 | 6.00pm | | |
| Thurs 13 December 2018 | Yrs R, 1, 2 | 2.00pm | | |
| Fri 14 December 2018 | Yrs R, 1, 2 | 10.00am | | |
