



Rushen Primary School

Newsletter

November 2019



Dear Parents/Carers,

Please be aware that many pupils are currently absent due to a range of illnesses. Please see the advice below regarding germs and influenza. If a child vomits, they must stay off school for at least 48 hours after their last symptoms. Some Island schools have had a very high number of absences, as RPS has, and there are concerns that children are attending school whilst ill, which is encouraging illnesses to spread.

This has been a busy half term as usual, with lots of learning and events. Following our adoption of Port Erin beach, most classes have been to the beach, either to take part in a beach clean or to undertake some learning. All of the classes who have been to the beach have thoroughly enjoyed their time there. Many of the activities that classes have undertaken on the beach have been linked to their learning in school and many Viking Runes have been left on the sand for other beach users to spot. We are now preparing for our Christmas productions and celebrations and the children are busy learning lines, songs and acting parts - thank you for all your help with this!

Drop off - mornings

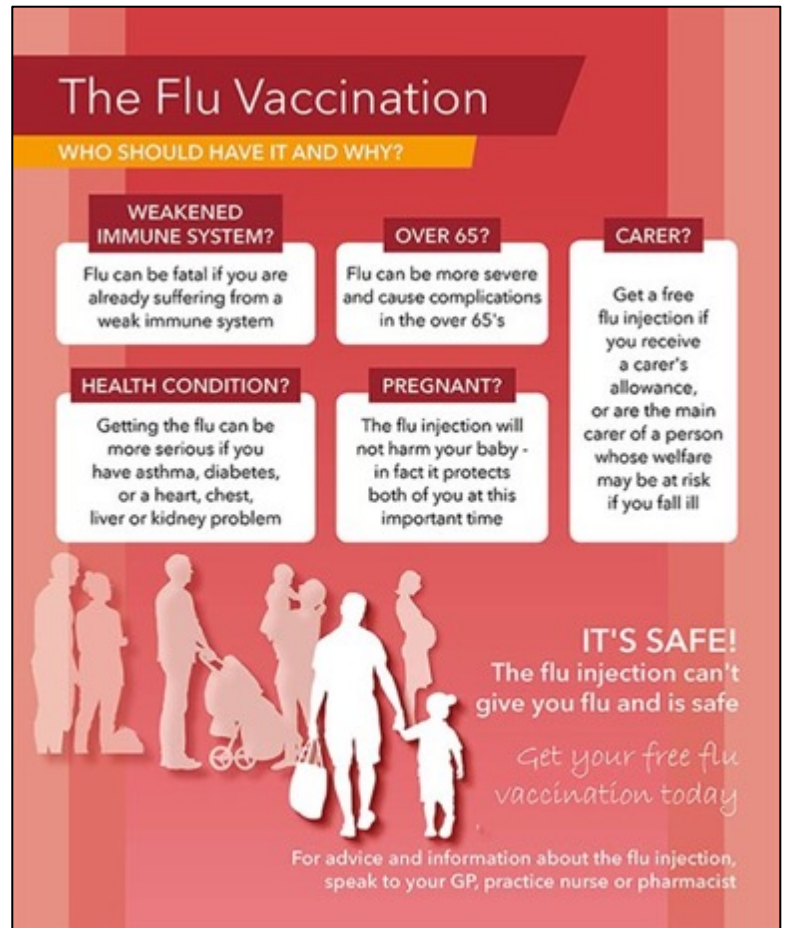
There have been some particular issues with drop off in the mornings. Just a reminder to say that we are lucky that we have so much space to park compared to some other local schools. The Police have been watching vehicular and foot traffic on Church Road outside our school and have asked me to pass on their concerns:

- There is a staffed crossing and Police are urging parents to use it and to show their children how to use it.
- The Police observed parents taking their children out of their car and allowing them to stand in the road, or physically placing younger children in the road and not on the pavement side, placing them at risk from oncoming traffic.
- Police would like to remind parents that they are able to use the road all the way along Church Road, rather than in the Ballakilly Estate, as some people are parking very close to the entrance to the estate and blocking entry for residents.
- There is a school car park available for drop off on Castletown Road.
- Some members of the public are driving at speed when coming off the roundabout and the Police are reminding everybody about the 20mph zone - following an officer attending with a handheld speed camera.
- Arriving on time, parking safely and using the opportunity to 'walk to school via the crossing' would encourage road safety and a healthy lifestyle.

The Police have recommended that if the situation does not improve, we may need to direct people around the KS2 building and close the KS1 entrance past the Unit and the KS1 hall.

Garden and Polytunnel – we urgently need help from families willing to support us with refurbishing and sorting out the Polytunnel and the garden ready for February. If you are able to help, please email Mrs Awkal and she will let Mrs Daniel know. A kind anonymous donor has offered to replace the ripped plastic on the polytunnel frame, which I am know the children will be pleased about. We have some very keen gardeners!

Ms Owens
Headteacher



Influenza (Flu)

How you can help protect yourself and your family against flu this coming winter, and why it's very important that people who are at increased risk from flu have their FREE flu vaccination every year.

Flu occurs every year, usually in the winter, which is why it's sometimes called seasonal flu. It's a highly infectious disease with symptoms that come on very quickly. Colds are much less serious and usually start gradually with a stuffy or runny nose and a sore throat. A bad bout of flu can be much worse than a heavy cold.

The most common symptoms of flu are fever, chills, headache, aches and pains in the joints and muscles, and extreme tiredness. Healthy individuals usually recover within two to seven days, but for some the disease can lead to hospitalisation, permanent disability or even death.

Flu is caused by influenza viruses that infect the windpipe and lungs. And because it's caused by viruses and not bacteria, antibiotics won't treat it. If, however, there are complications from getting flu, antibiotics may be needed.

When an infected person coughs or sneezes, they spread the flu virus in tiny droplets of saliva over a wide area. These droplets can then be breathed in by other people or they can be picked up by touching surfaces where the droplets have landed.

You can prevent the spread of the virus by covering your mouth and nose when you cough or sneeze, and you can wash your hands frequently or use hand gels to reduce the risk of picking up the virus. But the best way to avoid catching and spreading flu is by having the vaccination before the flu season starts.

During pregnancy, all pregnant women should have the flu vaccine to protect themselves and their babies. The flu vaccine can be given safely at any stage of pregnancy, from conception onwards. For more information visit our [Vaccinations during pregnancy page](#).



As you are aware, a letter was sent home regarding the NSPCC visit to our school earlier this month. The NSPCC delivered assemblies to EYFS, KS1 and KS2 and carried out workshops with Y5/6 pupils on the 'Speak out, Stay safe' theme. Further information can be found by following the link <http://nspcc.org.uk/buddy>

Braddan Class Assembly

Braddan Class planned, wrote and performed their class assembly based on the learning they had been doing in class about 'Invaders and Raiders' and Science. The children demonstrated the learning that they had undertaken and everybody was very impressed with the amount they had learnt and also the learning skills that they used!



Patrick Class Assembly

Patrick Class performed their class assembly to a large audience. They introduced their assembly with the 'Learning Muscles' and proceeded to show what they had learnt. They included their paintings and drawings, songs, hot-seating and acting. A fantastic assembly on their theme of 'Invaders and Raiders' which has really inspired the children.



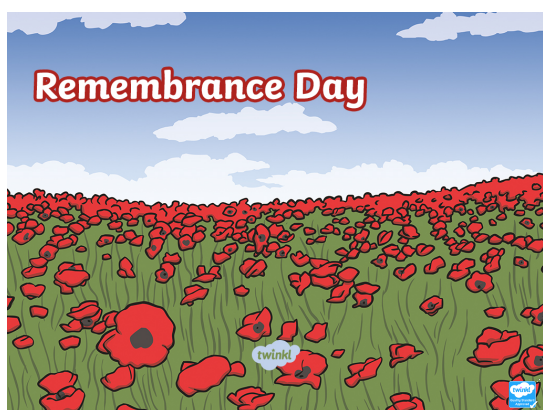
Hop Tu Naa

Mrs Walker!



Our Hop Tu Naa celebration went very well and was enjoyed by all! Many dressed in interesting and creative costumes so thank you to pupils and parents alike. The highlight, yet again, was the fantastic carved 'moots' that you worked on at home with your children - thank you.

Remembrance Day



Rushen Primary School has a tradition that we follow every year on Remembrance Day. Weather permitting, the children stand in class circles on the playground and wait for the signal (maroons sound at the start and the end of the two minutes silence). We then stand in silence for the two minutes. The children did very well and were respectful, reflecting during the silence.

£269.15 was raised by our pupils through the sale of poppies and other Remembrance Day memorabilia and the amount is included in the magnificent sum of £9,552.75 raised by the district of Port Erin this year.

Children In Need

We were lucky enough to have Pudsey Bear visit us during the week of Children in Need and on Friday 15th November pupils came to school dressed in spots and/or stripes and made a donation in support of Children in Need. £302.94 has been donated to the charity. Thank you!





Badminton Competition...

The RPS Badminton Club run by Mrs Ollier, has been very well attended this term. The children who represented the school really enjoyed the competition.

“The badminton competition was really fun. We won 20 games and came 5th out of 31 teams. Some teams were really good, but we managed to beat some of them. We swapped partners and supported each other. We were very proud of ourselves”.

Well done to our RPS Badminton team!!



After School Clubs

Please collect children from the front door/main school entrance following an after school club. If children use their school PE kit for a club, they will get changed into their uniform and return the PE kit to the classroom.

Visitors

Viking Workshop

KS2 participated in ‘Viking Workshops’ with visitors from the Manx Museum. The children enjoyed the sessions and were totally engaged!



School Trips

Adopting Port Erin Beach

As part of our adoption of Port Erin Beach, classes have visited the beach to undertake learning opportunities.

Patrick, Maughold and Lonan Classes visited the beach and thoroughly enjoyed the experience, especially making Viking Runes in the sand. Thank you to Parents and Carers for accompanying us.



Andreas Class visited on another day and collaborated in groups to plan and build a sandcastle.



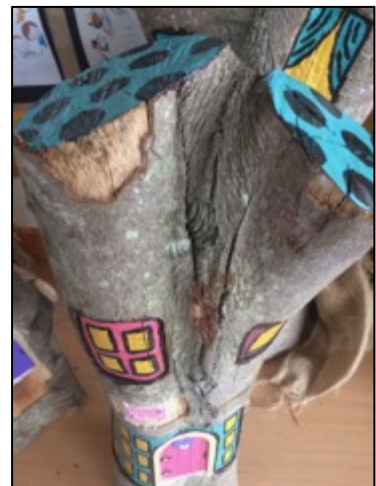


Marown Class also visited the beach...



Community Fairy Houses

In partnership with Port Erin Commissioners and Men in Sheds, our pupils, under the watchful eye of Mrs Shaw, have been painting and decorating Fairy Houses which will be placed in Athol Glen in Port Erin. There have been many heavy tree trunks delivered to school which the children have diligently painted. Well done!





Pupil Information, Consent Forms and GDPR

Please remember to let us know if you require changes to any information, including consents, home addresses and telephone numbers.

We have commenced registering pupils due to join our school in September 2020. If your child's birth date is between 01/09/15 and 31/08/16, please collect a registration form from the School Office, complete and return it as soon as possible, unless you have already registered your child. If you know anyone who has a child this age who does not have siblings at school, please could you remind them to register their child. The number of teachers allocated to our school for the school year is based upon the number of pupils we have registered at the end of January and cannot be altered after that date.

Thursday morning meetings – please contact your Class Teacher for an appointment if you wish to discuss your child's progress or well-being. The Class Teacher may contact you to arrange a meeting. You can also see the teacher at the end of each day or leave a message if you are unable to pick up.

School Dinners

School Dinners will cost £69.00 for the first half of the Spring Term or £138.00 until the Easter Holiday.

Please ensure that your child's school dinner account on ParentPay is in credit. We currently have 66 pupils who are in debt. If your child swaps from School Dinners to Packed Lunches or vice versa, please send a written note to school, giving a week's notice of the change.

Advent Calendar Food Bank



We will be collecting items for Foodbank Isle of Man in preparation for Christmas. Beginning on December 1st we would be grateful for any donations you can make. By bringing food every day in December, similar to an Advent Calendar, we are giving and not taking. Please send items such as:

Tinned meat (ham, stews, mince, hot dogs, etc.), small coffee jars or fruit juice cartons, fish (e.g. salmon), stuffing mix, gravy granules – chicken or turkey, £1 or £2 coins, vegetarian or vegan alternatives, tinned fruit, trifle ingredients or mix, tinned vegetables, Christmas pudding or cake (alcohol-free please!), biscuits, sugar, mince pies, Christmas treats for children, selection boxes, pasta sauce or other sauces, jams or spreads, breakfast cereals or porridge oats, UHT milk, toilet rolls, toothbrushes, toothpaste, kitchen roll, washing up liquid, laundry capsules, shampoo, shower gel, soap.

Please send the donations to school with your child. The donations will be collected and displayed in the Entrance Hall. We are encouraging everybody to bring in at least one item during December. Many local families will benefit from your generosity, particularly at this festive time of year.

DATES FOR YOUR DIARY

| | | |
|-------------------------------------|-----------------|-------------------------------------|
| Wednesday 11 th December | 2.00pm | KS2 concert (Years 3 – 6) |
| Wednesday 11 th December | 6.00pm | KS2 concert (Years 3 – 6) |
| Thursday 12 th December | 2.00pm | KS1 concert (Reception to Year 2) |
| Friday 13 th December | 10.00am | KS1 concert (Reception to Year 2) |
| Monday 16 th December | afternoon | Reception Christmas Party |
| Tuesday 17 th December | afternoon | Year 1 Christmas Party |
| Wednesday 18 th December | afternoon | Year 3 and Year 4 Christmas Parties |
| Wednesday 18 th December | 5.00pm – 6.30pm | Year 5 and 6 Christmas Disco |
| Thursday 19 th December | afternoon | Year 2 Christmas Party |

Children may bring a set of party clothes to school on the day of their party, to change into.

Friday 20th December, 2019 If pupils would like to, they may wear a Christmas jumper to school instead of their school sweatshirt on the last day of term. Pupils are also welcome to bring a Christmas cracker to school for lunchtime that day.

| | | |
|---------------------------------------|--------|---|
| Friday 20 th December 2019 | 3.30pm | School closes for the Christmas Holiday |
| Monday 6 th January 2019 | 8.45am | Spring Term commences |