



# Rushen Primary School Newsletter



September 2022



Port Erin September 2022

Dear Parents/Carers,

## Welcome back to the new school year 2022-23 Learning and Growing at Rushen Primary School

Welcome to our returning families and to all of our new families.

The children and staff have made an excellent start to the new term. We have been very impressed with how the children have settled back into our routines and 'what we do around here' so quickly, as well as meeting the expectations for behaviour and learning.

The 'Meet the Teacher' meetings were a success and I would like to thank those parents I spoke to for their positive feedback about our school and how happy their children are at our school. We value home/school links and our positive relationships with parents and carers. Thank you as always for your support. Please do not hesitate to contact your child's class teacher if you have any queries.

Some parents have brought to our attention recent posts on social media, open to the public, where they mention children's names and situations that may have happened. Please contact the class teacher if you have any concerns so that they can be sorted out.

Our Newsletters aim to ensure good communication regarding events, information about the school and as a record of the school's history. As you are aware, we can't always take part in every event on the Island but we try to take part in a range of activities throughout the year, which are showcased in our Newsletter. Some events clash with other arrangements and sometimes we don't have enough staff to ensure the safety of pupils, or transport is not available, for example. If we intend/are able to take part, we will let you know.

We thoroughly enjoyed the stay and learn sessions, class assemblies, school video viewing (due for a new edit!) and the tours of our school that we undertook in the summer term and we look forward to more opportunities this academic year. The feedback was very positive and it built on the already strong partnership that exists between home and school – thank you for your enthusiastic response. Members of the public and friends of the families of pupils at our school have also been commenting positively. The whole school community is rightly proud of our school and the children, staff and families have worked hard in partnership to build a happy and successful school. 😊

We look forward to the school year ahead and the staff and I look forward to speaking to you all, as the year progresses.

Take care,

Ms Owens, Headteacher

## Times of the School Day

We have reviewed our timings at lunchtime and now operate a staggered system in Key Stage 2 due to the number of pupils in that Key Stage, allowing them all to have plenty of time for lunch. The new system ensures that KS2 children have fewer children on the playground for some of the lunch break. Y5/6 and Y3/4 enjoy some playtime by themselves, although there is a significant amount of time when children can play with all year groups across the Key Stage.

	Years R	Years 1, 2, 3, 4	Years 5,6
<b>Day Begins</b>	08.45 Doors open 08.50 Register opens 09.00 Register closes	08.45 Doors open 08.50 Register opens 09.00 Register closes	08.45 Doors open 08.50 Register opens 09.00 Register closes
<b>Break</b>	10.35 - 10.50	10.35 - 10.50	10.35 - 10.50
<b>Lunch</b>	11.50 (and Year 1 and 2)	12.05	12.15
<b>Afternoon Session</b>	13.05	13.05	13.15
<b>Break</b>	14.15 - 14.30	14.15 - 14.30	14.15 - 14.30
<b>End of Day</b>	15.30	15.30	15.30

## Classes

We decided that we would like to continue with our theme of 'everything Manx' and named our classes after Manx Glens.

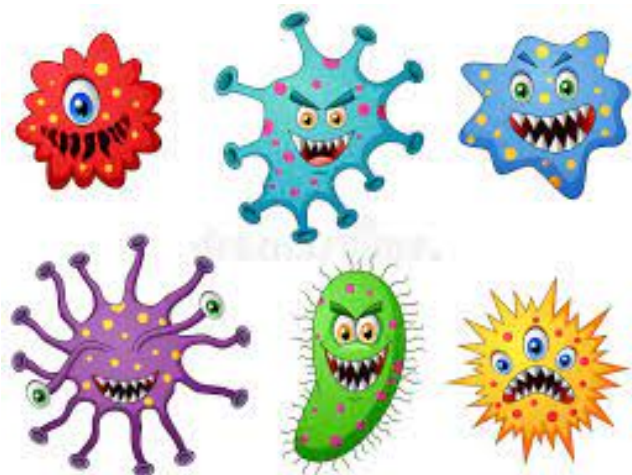
Class Name	Year Group	Teacher
Laxey Glen	R	Mrs McMeiken
Elfin Glen	1	Miss Smiley
Tholt-Y-Will Glen	2	Miss Quayle
Dhoon Glen	2	Mrs Shaw
Glen Maye	3/4	Mrs Griffiths
Glen Mooar	3/4	Mrs Dunajewski
Glen Helen	3/4	Miss Merriman
Ballaglass Glen	5/6	Mrs Higgins/ Mrs Bousfield (Friday)
Bishopscourt Glen	5/6	Miss Annesley
Ballure Glen	5/6	Miss Dixon
Port Soderick Glen	Ace Base/Unit	Mrs Hermann
PPA Cover	All	Mrs Bousfield / Mr Moultrie

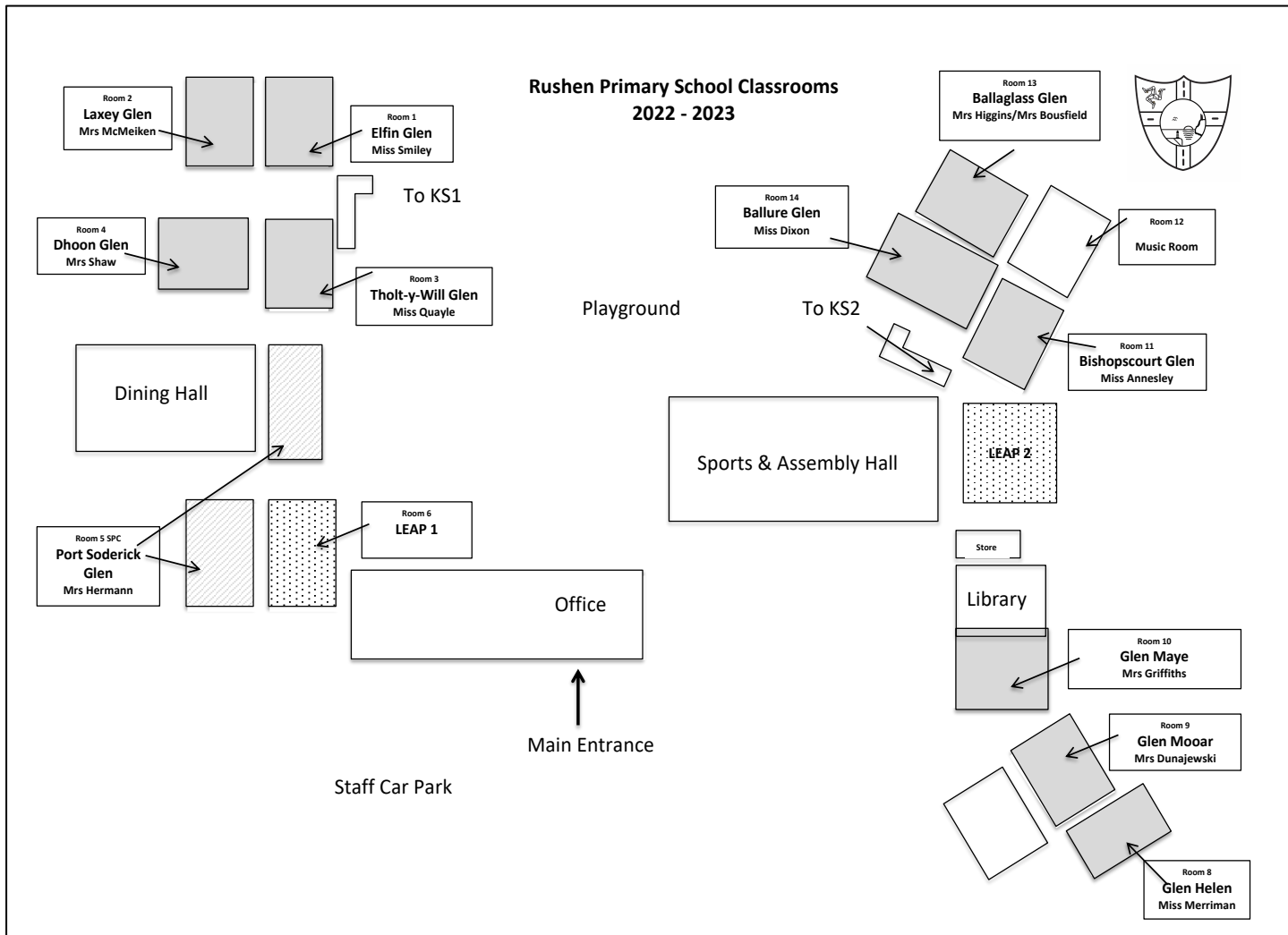
## Hand Hygiene and Ventilation

Please watch this video (from the NHS) with your child to remind them how to wash their hands. Hand hygiene continues to be very important, particularly as we move into the autumn/winter period.

We will also continue to ventilate/open windows where possible.

<https://www.youtube.com/watch?v=S9VjeIWLnEg>





## Prefects

This year, as part of our 'Everyone a Leader' focus, every one of our Y6 pupils will be expected to be a prefect. This is an honour and relies on each prefect to be an excellent role model and able to build positive relationships with younger children and adults in and out of school. They may be called on to represent the school, meet visitors and take on extra responsibilities, as well as being good learners. We will change the prefects every term and look forward to all of our Y6 pupils taking part. Congratulations to our first group! We are very proud of you.



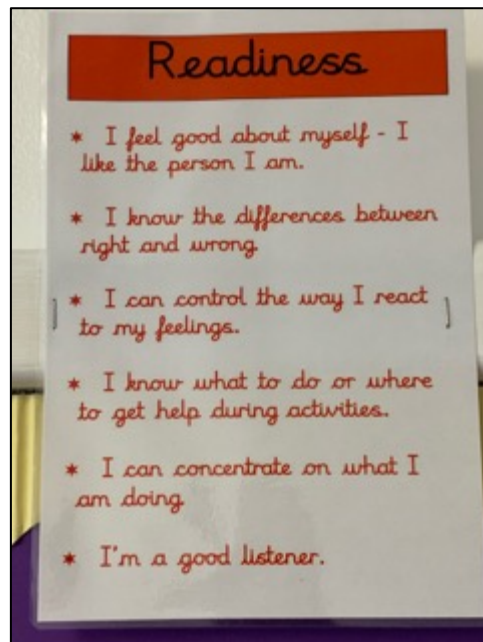
## Our Early Years Foundation Stage, Reception Class

The children in our Reception Class have settled in very well. Here they are playing out...



**Readiness...** This is the first of our 6Rs and something we ask you to focus on with your child, talking about how they can be ready for school and for learning. Please encourage independence and involve your child in their own preparations.

- ✓ Children should be in school every day. They should arrive on time for the school day at 8:45am (8.51am will be marked as late in the Register) and be collected promptly at 3:30pm. Children who arrive early **must** be supervised by parents/carers. Teachers have commitments before and after school so are not available to provide supervision at these times. Children should be made aware of their own end of school pick up arrangements before they leave for school in the morning. If there is an emergency and parents are going to be late, please contact school in advance in order to share alternative arrangements.
- ✓ **Coats** – it is essential that all children bring a suitable (waterproof) coat (named) with a hood, to school every day. The children will be going out in all weathers.
- ✓ **Uniform** – children should wear a maroon sweatshirt/cardigan, white polo shirt, black/grey skirt or trousers, black school shoes (NOT trainers). Each item must be named. No jewellery, except a watch and stud earrings, no hoops are allowed. Long hair (all children) should always be tied up with a simple hair band (no large bows or bands). Children must not wear make-up or nail varnish to school. Please ensure skirts are not too short/wear shorts underneath, as the children sit on benches and will be moving about in their uniform during learning activities - this will also be outside. PE kit – white or maroon t-shirt and black shorts/pumps/trainers.
- ✓ **Water Bottle** – children should bring a water bottle and these must contain only water.
- ✓ Please wear PE kit on PE days. Please wear black shorts/jogging bottoms/skins and a school jumper. Other tops are not allowed as this is still uniform.
- ✓ **School dinners** **must** be paid for in advance.



Thank you for all of your support with these arrangements 😊

## Assembly for Queen Elizabeth II

Y1-6 gathered to take part in an assembly about Her Majesty, Queen Elizabeth II. We remembered what she did and how she did her job. We looked back at the Jubilee and remembered our celebrations earlier in the year. We also talked about her sense of humour and we watched the clip from the 2012 London Olympics-James Bond and the clip from the Jubilee with Paddington. The children were very respectful and listened extremely well. They were an excellent audience.



### The Platinum Jubilee

In 2022, Queen Elizabeth II celebrated her Platinum Jubilee. The occasion marked 70 years since she became Queen of the United Kingdom and the Commonwealth of Nations. She was the first British monarch to reach this milestone.

Celebrations included:

- Trooping the Colour
- the Platinum Party at the Palace
- the Platinum Pudding Competition

The majority of events took place during a special bank holiday weekend to allow people across the country to join the celebrations.

### Princess Elizabeth's Youth

Princess Elizabeth was taught at home, not at school. She studied art and music and enjoyed drama and swimming.

When she was 11, she joined the Girl Guides.

She undertook her first public engagement on her 16<sup>th</sup> birthday, when she inspected the soldiers of the Grenadier Guards. They guard the royal residences.

During the Second World War, she served in the army as a mechanic.

### What was the Queen like?

We know that the Queen had a fantastic sense of humour...

### The Queen visited the Isle of Man...

## Learning at Rushen

Ballaglass Glen have been enjoying reading 'War Horse' by Michael Morpurgo. Here they are writing an action scene for the book using their 'imagining muscle'. The children could choose to collaborate or write independently to use single clause sentences for impact.



## Buildings and works updates

1. Roof replacement - The end section of the old building has now been replaced and is looking very smart. The final section of the flat roof on the newer building (KS1/EYFS) has also been replaced.

**KS2 building roof – all sections have now been replaced and the work completed.**



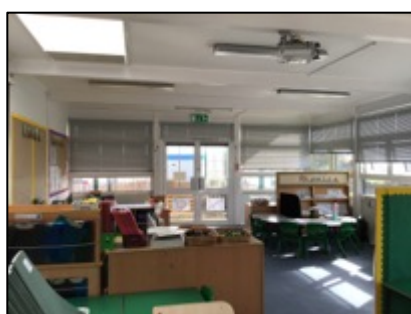
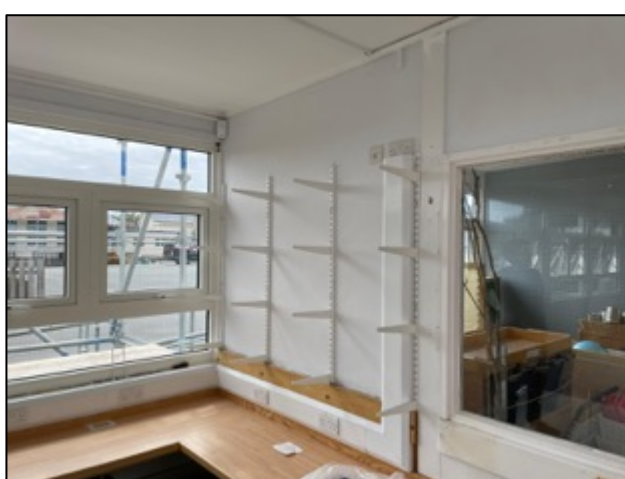


**KS1 building roof – the whole of the KS1 building roof has been replaced and the whole job completed. You can see below the thickness of insulation that was fitted.**



**Room 1, Room 2 and the KS1 corridor have been painted and blinds fitted where possible. New furniture for our Early Years Foundation Stage setting and for other classrooms across the Key Stages, has been purchased. By being creative with our budget and maximizing impact and value for money, we continue to upgrade our learning environments.**

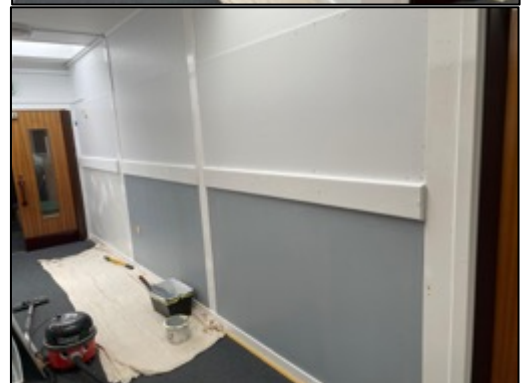
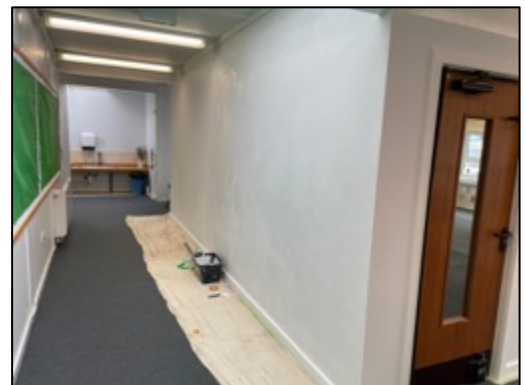
### Room 1



## Room 2



## 2. Corridor KS1





## School Improvement - Review of Learning Environments in Classrooms

There has been significant work done across the school to review and reorganise learning spaces to better facilitate the school's 'challenge-based learning' approach. We hope you noticed the work that had been done when you visited during your 'Meet the Teacher' meetings or have a look when you have a chance to visit your child's classroom, next time. I would like to thank the teachers for their hard work as well as Mrs Shaw and Miss Wardman who spent a significant time during the summer reviewing the learning environments. This should support pupils with their learning, their learning to learn skills and with 'what we do around here'.



## Attendance

Attendance is very important, helping to ensure that children make the best progress that they can. Absence in term time will only be authorised in exceptional circumstances. It is the Department of Education, Sport and Culture's policy that parents **request** an absence by writing to the Headteacher, Ms Owens.

Please let the school know about any absences due to illness by 9am on the **first day** of absence. It is the Department of Education, Sport and Culture's policy to closely monitor attendance.

## Communicating with School

Please contact the class teacher in the first instance with any questions or concerns. If your child has a medical/dental appointment, a written note should be given to your child's teacher. Please be aware that Mrs Awkal has many administrative and financial tasks and responsibilities and is our only member of office staff. Please leave a voicemail if the line is busy or unable to be answered and we will get back to you as soon as we can.

**It is crucial that you update your contact information when something changes. We *MUST* be able to contact you in an emergency.**

## Curriculum

Manx – all children in Key Stage 2 will be learning Manx this year and Years 3-6 will be learning to swim. Further curriculum information can be found on the curriculum overviews and the level/age related expectations information on the 'Learning at Rushen' tab on the school website.



## Reminders

### Parking/dropping off

Parking for parents is provided in the rear school car park off Shore Road. Parking is **not permitted** in the school car parks on Church Road - these are for staff use ONLY – or in Southlands car park. The only exception to this is for children arriving for our Specialist Provision Centre or disabled children or visitors. The Police have asked that the Zebra Crossing is used to cross the road or please use the crossing staffed by our crossing patrol, Sue Bowes, particularly if you park anywhere along Church Road. Please help to teach our children about road safety. In Years 1 - 6, the children should enter the school from the playground entrances. Please drop them at the lower car park or walk around the building into the playground.

### School Dinners

We encourage all children to have a school dinner. We have a committed kitchen staff who cook fresh, healthy and nutritious options on site. Pupils may choose daily from a healthy hot meal menu and a salad bar. We believe that this is good value for money when compared to buying ingredients for a packed lunch. **Please ensure school dinners are paid for in advance, via Parent Pay.** Should your child decide to swap from school dinners to packed lunches or vice versa, please give the class teacher one week's notice in advance (in a written note), so that we can alert the kitchen and arrange for meal charges to be stopped for your child. School dinners this term cost £77.55 until half term, £171.55 until the end of term or £11.75 per 5 day week.

### Medical

Inhalers (named) must be left in school every day. Children will take these with them if they go out of school for any reason. Please ensure that your child has anything they need for a medical reason in school, including up to date Epi Pens and other medications such as Piriton, for those that have been diagnosed with an allergy (or alternative medication prescribed by a doctor). Other medication must be administered by parents at home.

Asthma forms have been sent home with all pupils who have an inhaler in school. It is vital that this information is kept up to date. If your child has an inhaler in school and has not given you a form, please speak to Mrs Awkal. Please ensure that any updates are communicated to school immediately

Any children with medical needs have their own poster with their photograph on it. The specific arrangements for each child are listed and displayed in staff areas and around the school, so staff can be familiar with the children and their needs.

Please inform Mrs Awkal if there are any medical updates as soon as possible.

### Wednesday 5<sup>th</sup> October – Rock Kidz

Rock Kidz are visiting our school to deliver an exciting rock 'n' roll workshop to all year groups. Throughout the school day they will be transforming the whole school into Rockstars and inspiring pupils to be the best they can be. Their experienced team will be teaching key messages such as self-esteem, anti-bullying, aspirations and inclusion through unique Rock Kidz songs.

At the end of the school day there will be an opportunity to meet the team in the School Sports hall, and purchase the official Rock Kidz Merchandise for your child if you wish. All purchases can be made with cash or card.

T-Shirts £12, Caps £15, Hoodies £20



If you'd like to learn more about the organisation please visit [www.rockkidzonline.com/ontour](http://www.rockkidzonline.com/ontour)

## Monday 10<sup>th</sup> October - School Photograph Day

Please ensure your child is smartly dressed in full school uniform. All pupils will be photographed individually, with their school age siblings and their class during the day. If you wish your preschoolers and secondary school children to be photographed with their Rushen Primary School siblings, please take your children directly to the Sports Hall at 8.20am. Any families with secondary school pupils will be photographed first, so that they can get to school as early as possible. Any families whose child has additional needs will also be prioritised. This year, we shall try a number system when you arrive, and see if it works better, so that people feel the system is fair. Thank you in advance for your co-operation in our efforts to ensure that the photos are taken quickly and the process runs smoothly. 😊

## Friday 14<sup>th</sup> October - Seasonal Childhood Nasal Flu Vaccine

The School Nursing Team will administer the seasonal childhood nasal flu vaccine to children whose parents have given consent. If you wish your child to receive the nasal vaccine, and have not yet consented, please would you do so as soon as possible using the following link:

<https://www.gov.im/media/1374294/flu-letter-110722.pdf>

Further information about the vaccine programme can be found at <https://www.gov.im/childhoodflu>

## Clubs

The following clubs are underway:

Netball	Years 3, 4, 5, 6	Mondays 3.30 – 4.30pm
Girls Football	Years 2, 3, 4, 5,6	Tuesdays 3.30 – 4.30pm
Running Club	Years 3, 4, 5, 6	Wednesdays 3.30 – 4.25pm
Hockey Club	Years 3 & 4	Thursdays 3.30 – 4.25pm